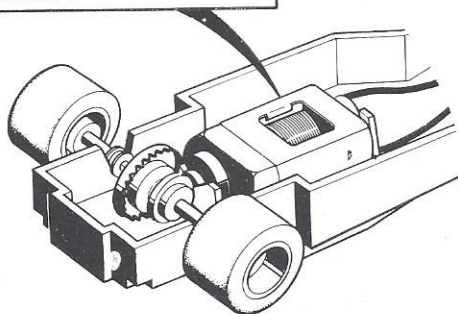


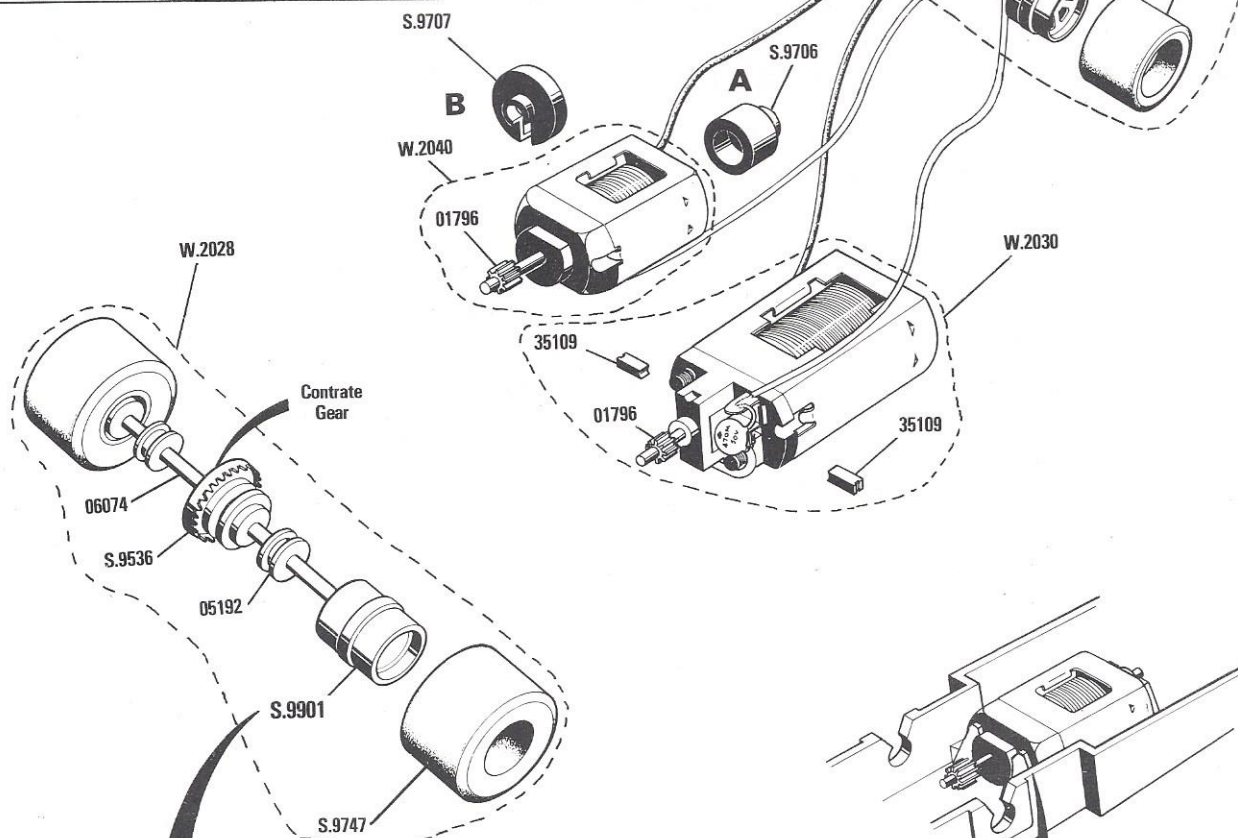
- C.051 BRM P160**
C.120 Brabham BT 44B
C.123 U.O.P. Shadow
C.127 McLaren M23
C.133 Wolf WR5

As produced from 1977

W.2040 motor fitted into unmodified body using Motor Brackets **A** and **B**, S.9706/7.



Views show car in "upside down" position. When reassembling ensure that contrate gear is on the correct side and that wires from motor to guide blade are not crossed.

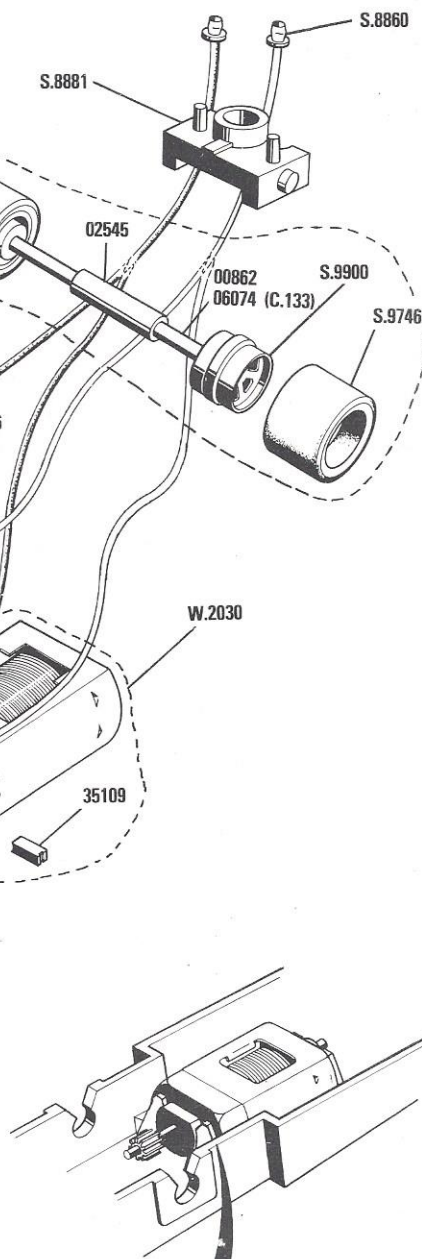
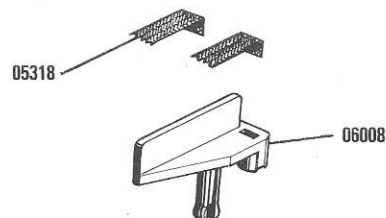


Replacement Hubs, S.9900/1;
supplied will be black only.

Modifications are made to models from time to time. If a spare part is required which does not coincide with the illustration, a full description should be given and, if necessary, a sketch or sample should accompany the order.

There are two types of motor in use on these models, W.2030 and the newer W.2040 which, although smaller, has similar operating efficiency. Some car bodies have been modified to accept only the W.2040 motor.

Cars with unmodified bodies will accept either motor but if the W.2040 is used on such a body it must be fitted with Motor Brackets A and B, S.9706/7.



W.2040 motor fitted directly into modified car body.

- C.051 BRM P160**
C.120 Brabham BT 44B
C.123 U.O.P. Shadow
C.127 McLaren M23
C.133 Wolf WR5

As produced from 1977

Ref. No.	Item
W.2027	Axle Assembly—Front (C.051, C.120, C.123, C.127)
W.2028	Axle Assembly—Rear
W.2030	Motor/Wire Lead Assembly
W.2040	Motor/Wire Lead Assembly
W.2050	Axle Assembly—Front (C.133)
S.8860	Eyelet
S.8881	Guide Blade Adaptor
S.9536	Contrate Gear
S.9706	W.2040 Motor Bracket A
S.9707	W.2040 Motor Bracket B
S.9746	Tyre—Front
S.9747	Tyre—Rear
S.9900	Hub—Front
S.9901	Hub—Rear
00862	Axle—Front (C.051, C.120, C.123, C.127) ..
01796	Pinion
02545	Front Axle Spacer
05192	Rear Axle Bearing
05318	Pick-up Braid
06008	Guide Blade
06074	Axle—Rear (All models)—Front (C.133) ..
35109	Carbon Brush

Notes

ROVEX Service Centre

ALBERT STREET, RAMSGATE,
KENT, CT11 9HD, ENGLAND.

Items not illustrated

Bodies are supplied complete with Drivers Heads, Tail Vanes, Air Intakes, etc.

05967	Drivers Head (All Models)
--------------	---------------------------------

For C.051 B.R.M.

W.1051	Body Assembly Complete (Green)
S.8943	Air Intake
05961	Tail Vane

For C.120 Brabham

W.1120	Body Assembly Complete *(Red or White)
S.9532	Tail Vane
S.9533	Air Intake Main Section
S.9538	Air Intake Top Section

For C.123 Shadow

W.1123	Body Assembly Complete *(Black or White)
05961	Tail Vane *(Black or White)
06053	Air Intake *(Black or White)

For C.127 McLaren

W.1127	Body Assembly Complete (White)
S.9711	Air Intake
S.9712	Tail Vane

C.133 Wolf

W.1133	Body Assembly Complete *(Blue or Red) ..
L.5131	Tail Vane *(Blue or Red)

* When ordering state colour required